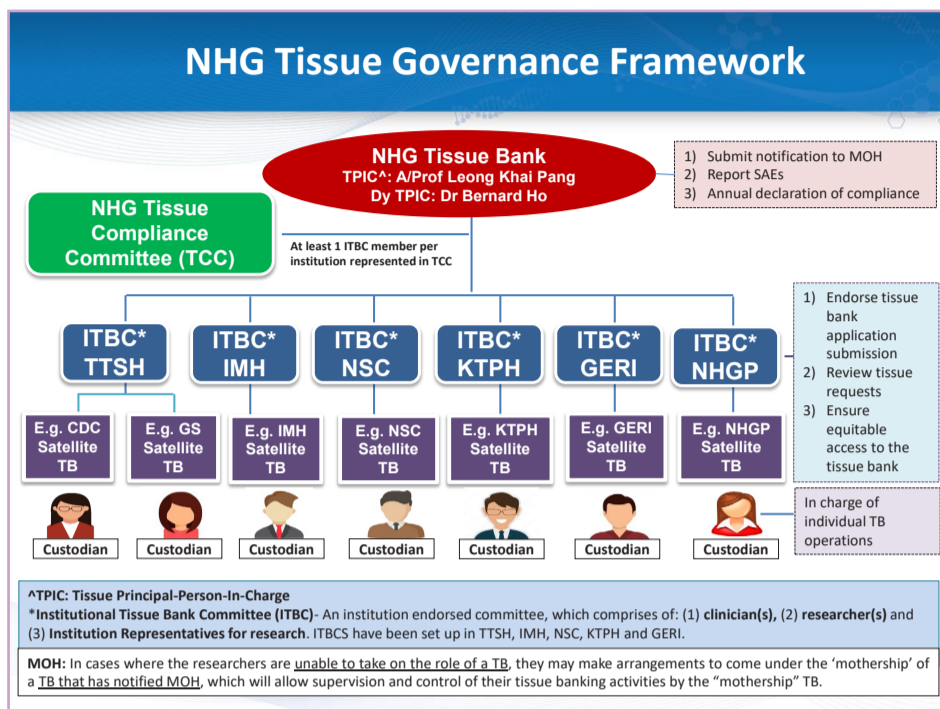


## Collecting human tissues for future research? Let ITBC help you!



- Clinical/ diagnostic laboratories that supply left-over/ waste tissue to researchers;
- Researchers who collect tissue in excess for the sole purpose of storage for future research;
- Persons in possession of tissue, who are not involved in research, but supply the tissue to other researchers.

NHG is registered under MOH as a single Tissue Bank. Under NHG TB's framework, each NHG institution has established an **ITBC to oversee institutional-level tissue banking activities**. ITBC comprises clinicians, researchers and IR (or equivalent) to ensure tissue banks comply with NHG Tissue Bank Policy, endorses tissue bank applications, review and approve tissue retrieval requests and also an important **contact point for PI** who requires assistance to ensure their informed consent form includes all HBRA 12(2) elements.

Please [click here](#) for NHG Tissue Bank Policy, Proper Conduct of Tissue Bank (PCT) SOPs and templates.

Do not hesitate to contact your ITBC secretariat at [jie\\_yin\\_yee@imh.com.sg](mailto:jie_yin_yee@imh.com.sg) to answer your queries on tissue banking activities!

Contributed by:  
**Ms Yee Jie Yin**  
 Secretariat, IMH ITBC  
 Senior Research Officer  
 Research Division  
 Institute of Mental Health

## You are aware of the Health Biomedical Research Act (HBRA). But how much do you know about the Human Tissue Framework (HTF) and Institutional Tissue Bank Committee (ITBC)?

The HTF was activated on 01 November 2019 to regulate and govern all tissue banking activities in accordance with HBRA and its subsidiary legislation. If you are involved in **collection, storage, procurement, importation, supply, provision or exportation of human tissue for future research**, you are subjected to requirements of HTF. Examples are:

## Global evidence, Local Decision

"Global evidence, Local decision", this is the tagline for JBI's gLocal Solution Room. "On 21st May 2021, from 0900 to 1630 hrs, **delegates from Indonesia, Malaysia, Philippines, Thailand, India, United Kingdom, United States came together to facilitate the adoption of global evidence for nursing practice in Singapore.**

This came after JBI, an international research organisation based in the Faculty of Health and Medical Sciences at the University of Adelaide, South Australia, accepted the bid from the **Institute of Mental Health (IMH) in collaboration with National University Hospital and the National University of Singapore to host the Solution Room 2021 in Singapore.** This local event is part of a week long global event comprising of a series of dynamic and interactive sessions to provide pragmatic solutions to challenges in getting evidence into practice in local settings. The local conference was successfully concluded on 21st May 2021 with a day of program involving 4 invited presentations, 8 abstract presentations and 2 moderated panel discussions.



**Clinicians, academics and policy makers submitted abstracts, shared their projects and learnt from speakers in this virtual webinar conference with ample takeaways to continue the implementation of evidence into their practices.** IMH's efforts to ensure evidence-based nursing practice was highlighted by the speaker.

Participants conveyed their appreciation for this synchronised and accessible inter-regional space to promote evidence-based practice discussion and debate in the post-event proceedings report.

Contributed by:  
**Dr Xie Huiting**  
 Senior Nurse Educator  
 Nursing Education  
 Institute of Mental Health

